



Windows 10.1" Tablet
UB-15MS10 / UB-15MS10SA

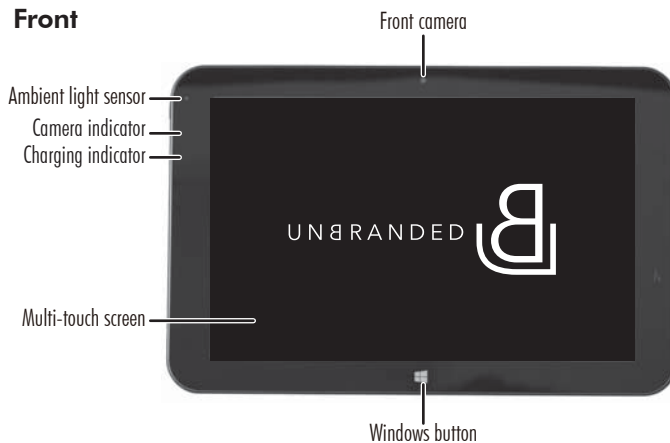
QUICK SETUP GUIDE

PACKAGE CONTENTS

- Windows tablet
- USB cable
- AC power adapter
- Quick Setup Guide
- Important Information

FEATURES

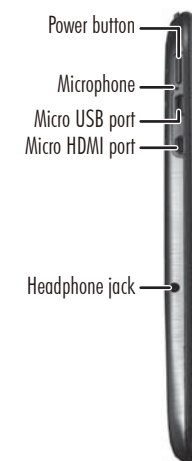
Front



Back



Left side



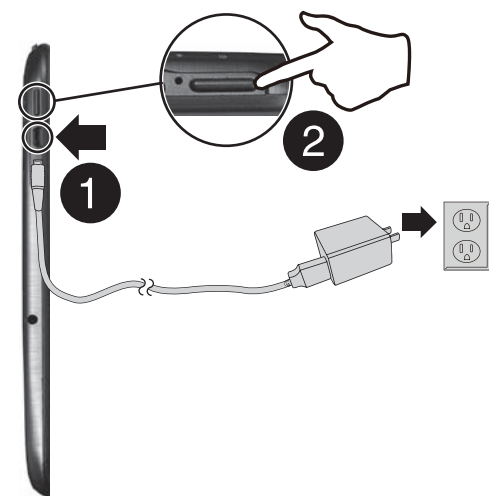
Top side



Bottom side



SETTING UP YOUR TABLET



1 Connect the USB cable to your tablet and AC power adapter, then plug the adapter into a power outlet.

Note: Charge your tablet fully before using it for the first time.

2 Press and hold the (power) button to turn on the tablet.

3 Follow the on-screen instructions to set up your tablet.

USING GESTURES TO NAVIGATE

Touch		Touch an item to open or select it.
Touch and hold		Touch an item and do not release until your tablet responds.
Drag		Touch and hold an item, then move your finger to where you want to place the item.
Swipe		Quickly slide your finger across the screen.
Double-touch		Quickly touch the screen twice.
Pinch		Pinch your fingers together or move them apart.
Rotate		Rotate your tablet to change the screen orientation. Note: If your tablet doesn't change orientation, press the (rotation lock) button on your tablet to turn autorotate on.

FINDING YOUR WAY AROUND

Start screen

Tap the icon to return to the Start screen.



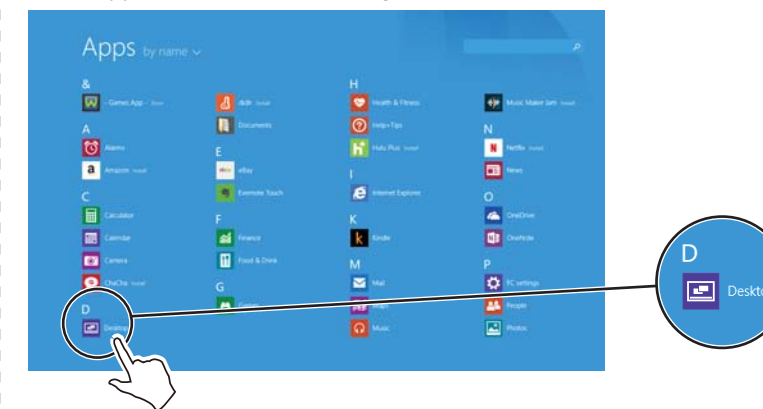
Apps

From the Start screen, swipe up from the center of your screen to view apps.



Desktop

In the apps view, touch Desktop.



FIND YOUR USER GUIDE ONLINE!

We are going green so a copy of your User Guide is not provided in the box but is available online. Go to www.unbrandedproducts.com, then click **Product Support**.

Open recent apps

Swipe from the left edge of your tablet toward the center of the screen.



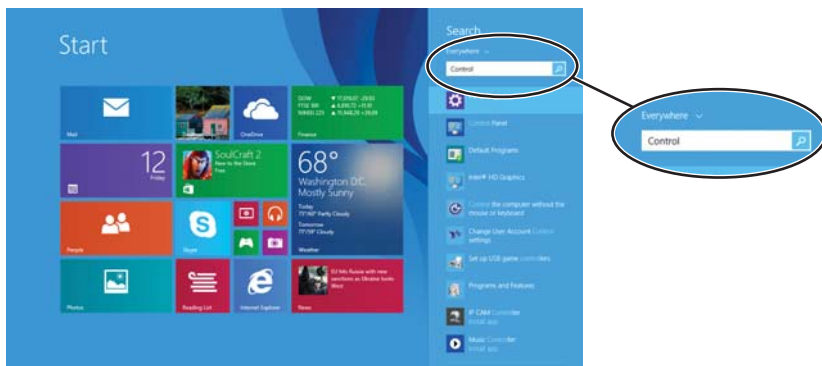
Charms

Swipe from the right edge of your tablet toward the center of the screen.



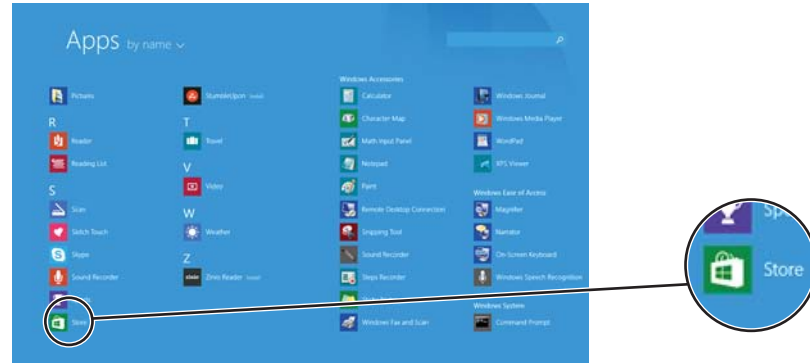
Search

Open Charms, touch **Search**, then type the name of the file, application, or setting you are looking for.



Windows Apps Store

From the Apps screen, touch **Store**.



CONNECTING TO THE INTERNET

1 Open Charms.



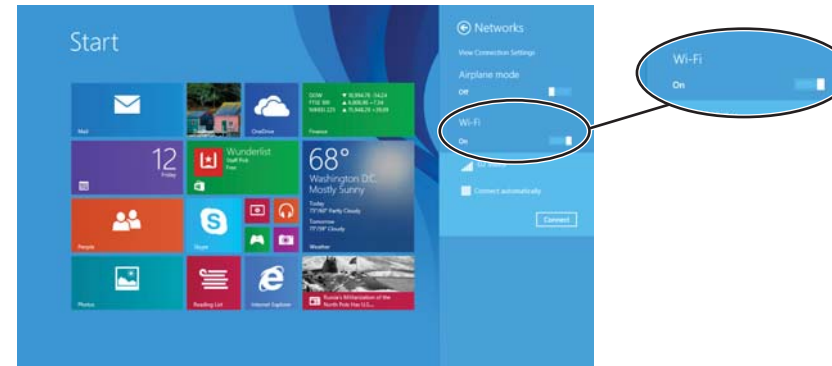
2 Touch **Settings**, then **Available** or **Unavailable**.

Notes:

- If **Unavailable** appears in the settings menu and Wi-Fi is turned on (see step 3), there are no Wi-Fi networks available.
- If the name of your network appears in the settings menu, you are already connected to Wi-Fi.



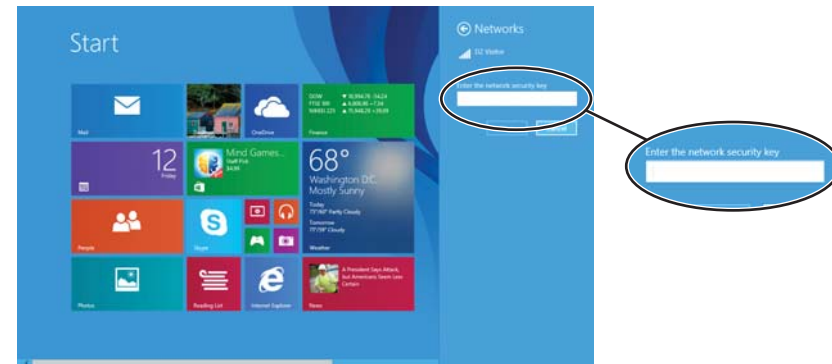
3 Touch the bar to turn on Wi-Fi, if needed.



4 Touch the network that you want to connect to, then touch **Connect**.

Note: Check the box next to "Connect automatically" if you want your tablet to automatically connect to this network in the future.

5 Enter the network password, if prompted.



6 If prompted, select either **Yes** or **No** to enable sharing between your tablet and other devices connected to the network.

REGISTERING MICROSOFT OFFICE

Your tablet comes with one year of Microsoft Office 365 Personal.

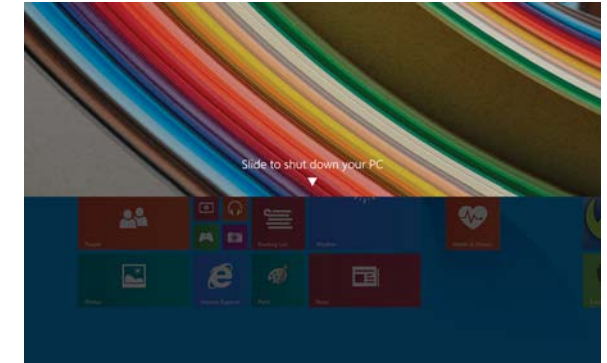
1 Open Apps.

2 Touch a Microsoft Office app (such as Word, Excel, PowerPoint, OneNote, or Office Web apps).

3 Follow the on-screen instructions to register.

TURNING OFF YOUR TABLET

- Press and hold the **Power** button for three seconds, then swipe down.



NEED MORE INFORMATION?

Find more resources online at www.unbrandedproducts.com.

Look for troubleshooting in the *Important Information*.

ONE-YEAR LIMITED WARRANTY

Visit www.unbrandedproducts.com for details.

CONTACT BEST BUY

For customer service, call 1-800-573-2692 (U.S. and Canada)

www.unbrandedproducts.com

Windows is a trademark or registered trademark of the Microsoft Corporation in the United States and/or other countries. Other company, product, or service names may be trademarks or service marks of others. UNBRANDED is a trademark of Best Buy and its affiliated companies. Registered in some countries. Distributed by Best Buy Purchasing, LLC 7601 Penn Ave South, Richfield, MN 55423 U.S.A. ©2014 Best Buy. All rights reserved. Made in China